

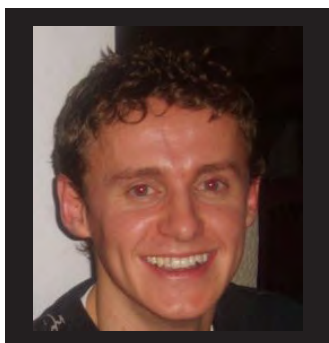
Dine Events

Team History When Daniel Gill worked in London, training under Prue Leith, he was lucky enough to work at locations from No 10 Downing Street to the V&A. He saw fantastic events and was determined to move back to Leeds and offer these same standards of innovation, quality and service to his clients. In 1998 Dine was launched and over a decade later, there is now a successful group of companies, offering our clients anything from delivered buffets to fully themed marquee events with Dine's award winning food and service.



Paul Lee, Executive Head Chef

Paul trained at Thomas Danby College in Leeds and worked at a number of prestigious restaurants and hotels across Yorkshire, including as Head Chef at Linton Springs Hotel. In 2001 he was appointed Regional Head Chef for Whitbread PLC, overseeing an enormous range and number of sites across the region. In 2003 he joined Dine as Executive Chef, with overall responsibility for food production across the group. His oversight of the operations covers everything from specifying the best breads for the Dine Hospitality buffets to designing spectacular flourishes for corporate events and



Matt Jones, Commercial Director

Matt has been a member of the Dine team in one guise or another for over 10 years. A graduate of Leeds University, Matt originally trained as a teacher before deciding to turn his part-time role at Dine into a career. A brief spell away from the business helped improve his commercial experience and he now looks after the business development, sales and marketing functions across the Dine Group. Occasionally we persuade him to put his Event Manager hat back on again too! When not at work Matt can be found playing football, reading or snowboarding.



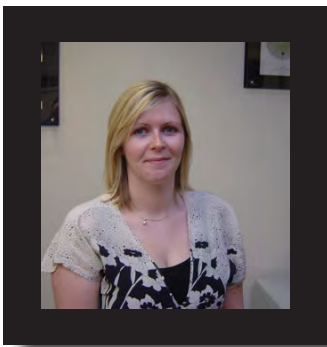
Maggie Wardle, General Manager

Maggie is a widely experienced Manager with a passion for getting the job done right (and making sure other people do too)! She previously worked for Aon, one of the largest insurance companies in the world, as Executive Assistant to three Directors. A challenging but exciting & all encompassing role. Maggie's thorough approach and incredible attention to detail enable the team to make every event special. Outside work her passion is football and she is a keen supporter of Bradford City Football Club.



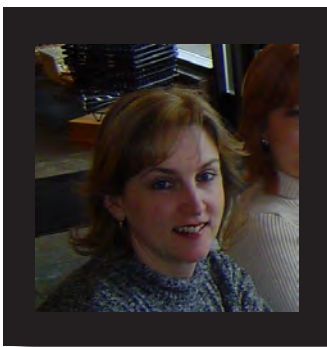
Craig Squelch, Events Manager

Craig trained at Blackpool College gaining an OND and HND in Hotel, Catering and Institutional Management. After over 20 years in the hotel trade, from trainee manager to General Manager and working all over the country from Guernsey to Yorkshire, Craig has broken away from the hotel industry for a new challenge at Dine Events. Joining the team in June 2010 as an Event Manager, Craig has a great eye for detail, a passion for events and is very much enjoying the variety that each week at Dine brings. Outside of work, you're most likely to find Craig in one of Yorkshire's finest Restaurants, wine merchants or pottering in his garden!



Danielle Everett, Events Manager

Danielle is the newest member of the Dine events team, joining us in July 2010. After completing her degree at Leeds Metropolitan University Danielle began her career with a very brief stint in recruitment before realising she missed the busy hospitality environment she was used to, this lead her to a Graduate position with a local hotel chain where she gained a real understanding of the wedding market, the natural step was to join Dine Events as a trainee event manager! Outside of work Danielle enjoys eating out (often too much!) and cooking. In an ideal world she would spend her time travelling the world.....for now Scarborough will do!



Teresa Coplestone, Financial Controller

Teresa is one of our longest serving members of staff. She trained in Cheltenham, obtaining an HND in Hotel, Catering and Institutional Management, before deciding to take Financial Management as her career going forward. Teresa worked for Thistle and Trusthouse Forte Hotels as Hotel Accountant and then Hotel Controller, covering many Hotels in the Leeds and York area. She joined Dine in 1999 and has seen the business successfully grow and develop over the past 12 years. Outside work Teresa enjoys family time and is a great fan of American TV series and watching her sons play cricket.

dine

making every event special

